

EVPI-A Series



Technical specification

Description:

Piston pressure switch

Pressure settings:

6 – 630 bar

Working pressure:

max. 650 bar

Repeatability:

$< \pm 1\%$ of setting

Fluid temperature:

-20°C to 75°C

Viscosity:

30 to 100 mm²/s (cSt) at 40°C

Recommended filtration:

25 µm

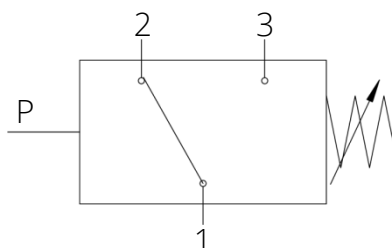
Compatibility:

Suitable for hydraulic oils in compliance with DIN51524

Weight:

0.35 kg

Hydraulic scheme:

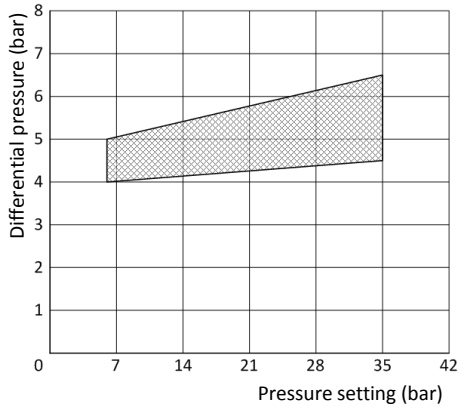


Order information

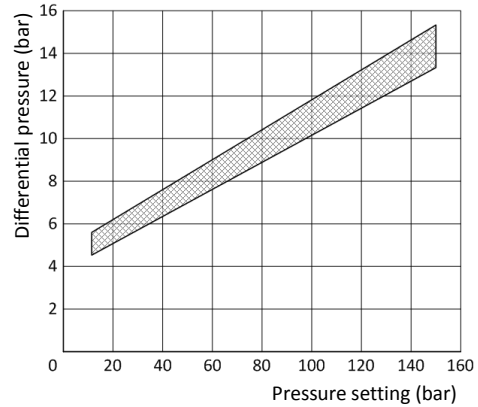
Order code	Pressure setting range	Max. working pressure	Repeatability	Weight (kg)
EVPI-A035	6 - 35 bar	350 bar	< ± 1% of setting	0.35
EVPI-A150	12 - 150 bar	350 bar		
EVPI-A350	30 - 350 bar	650 bar		
EVPI-A630	50 - 630 bar	650 bar		

Differential pressure

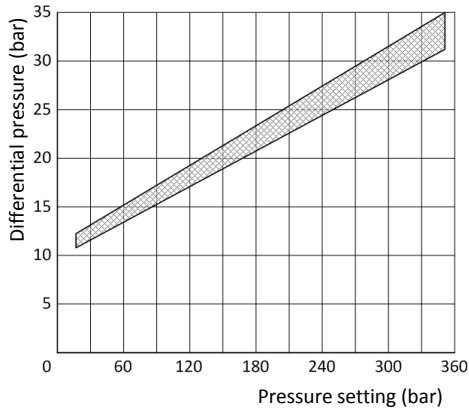
EVPI-A035



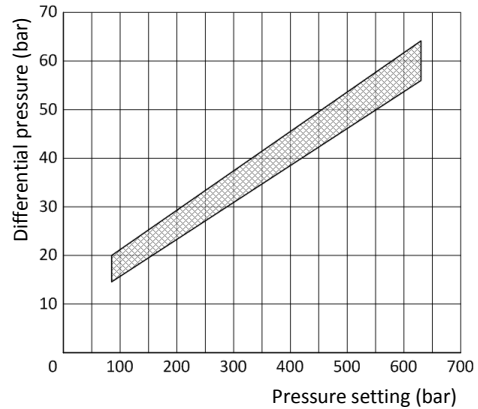
EVPI-A150



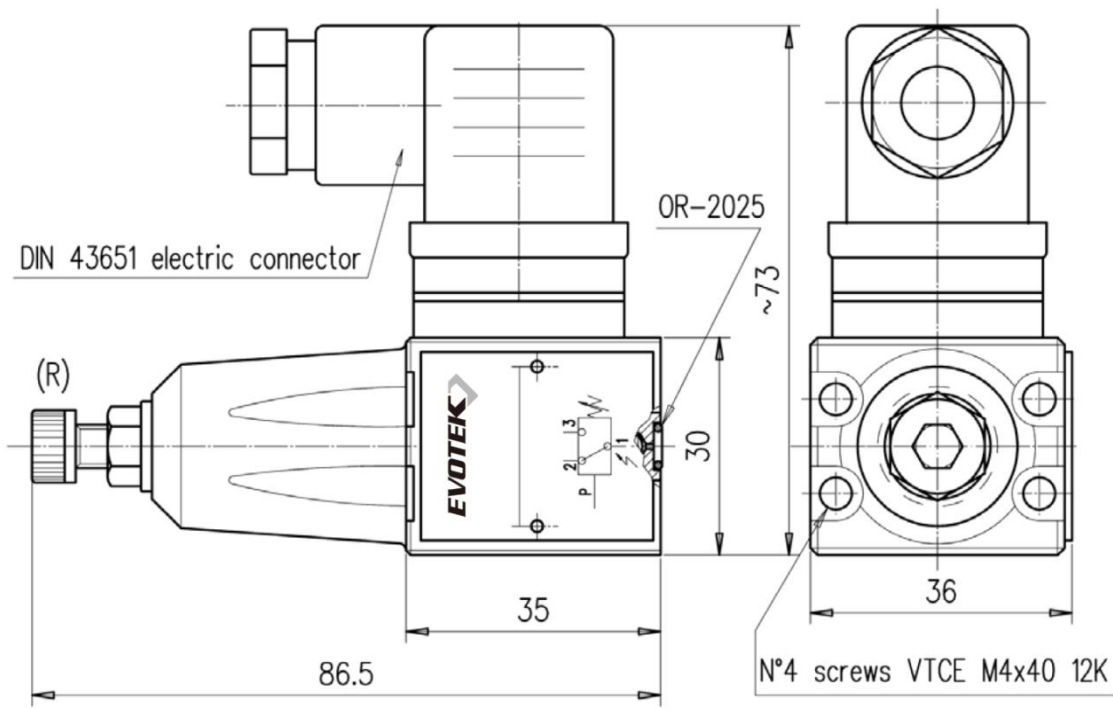
EVPI-A350



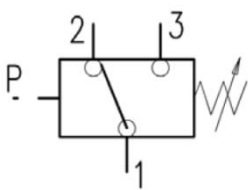
EVPI-A150



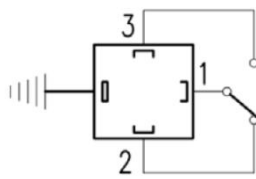
Dimensional drawing



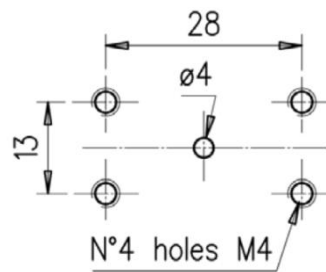
Hydraulic scheme



Contacts



Installation pattern



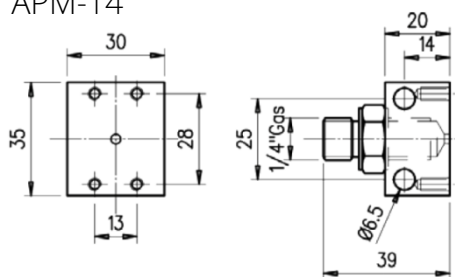
Electric characteristics

	125 AC	250 AC	30 DC	150 DC
Max. voltage (rated load)	7 Amp.	5 Amp.	5 Amp.	0.2 Amp
Connection frequency	Max. 120 cycles/min.			
Protection	IP-65			
Direct current with inductive load	Arching contact suggested			

The product has not to be used as safety device as stated in article 1, paragraph 2, letter D of Legislative Decree No. 93 from Feb. 25th 2000.
The component has been designed and manufactured meeting the requirements stated in Directive 97/23/CE (Legislative Decree No. 93/00).
The component is included in the category provided in article 3, paragraph 3, for which it can be commercialized without CE marking.

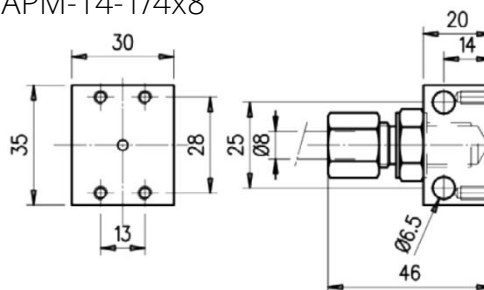
Adaptors

APM-14



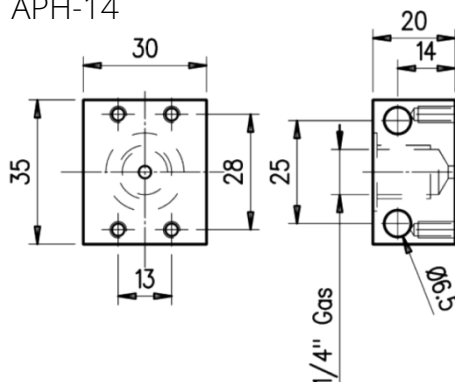
Adaptor for panel-mounting
Equipped with 1/4" BSP nipple

APM-14-1/4x8



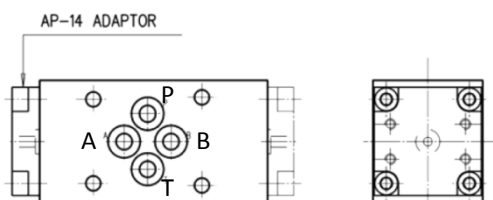
Adaptor for panel mounting
Equipped with 1/4" BSP tang for Ø 8 mm hoses

APH-14



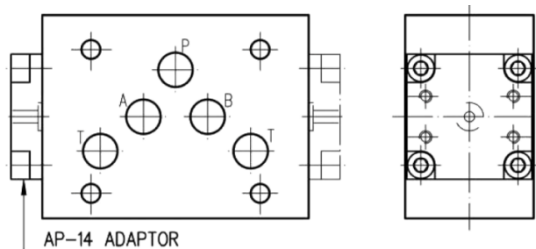
Adaptor for panel-mounting
with 1/4" BSP thread

SBM-03/210-IP-**-**



Replace the asterisks by the port on which
the device will be mounted
(e.g. SBM-03/210-IP-B)

SBM-05/210-IP-**-**



Replace the asterisks by the port on which
the device will be mounted
(e.g. SBM-05/210-IP-B)