



EAVL-T Series

EVOTEK level switches with thermo switch

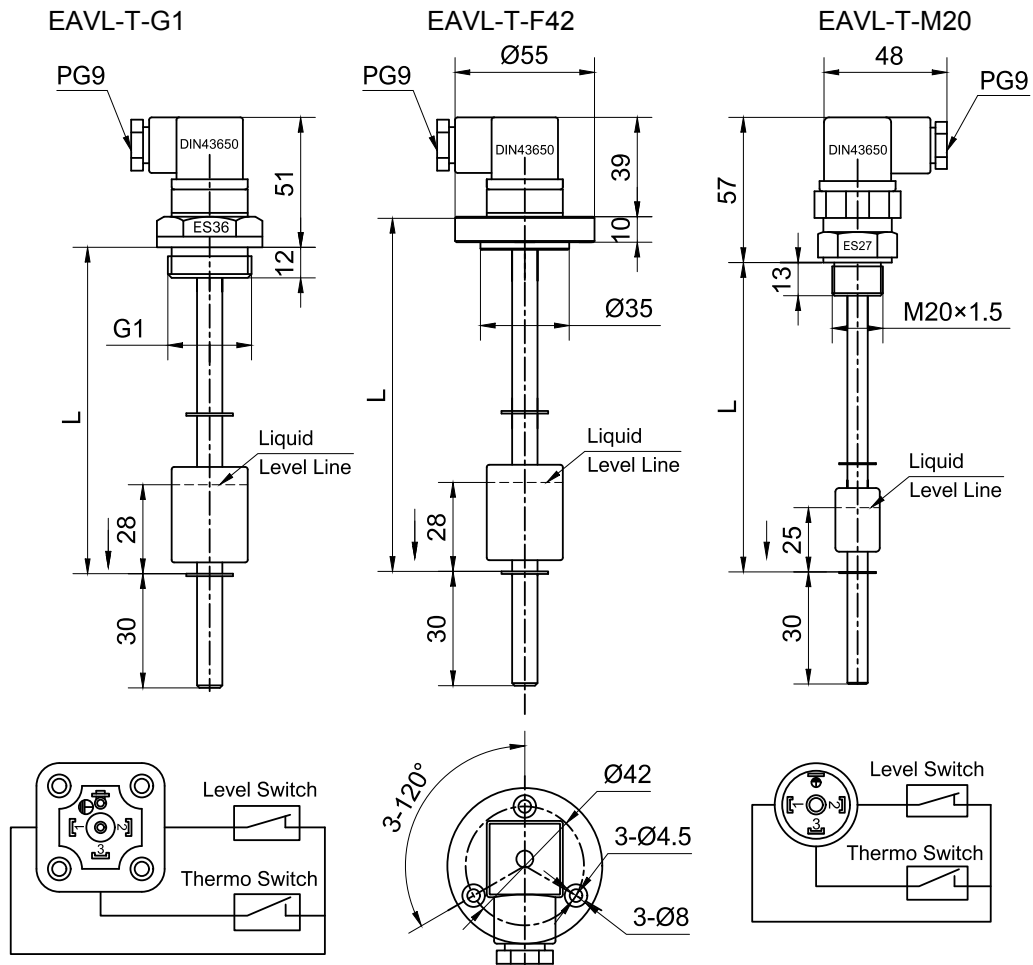
Product Description

- Can be dismantled without removing the tank cap
- Direct mounting on tank lid
- Level and temperature control in the tank
- Suitable with many different fluids
- With any length up to 1000mm possible

Technical Specifications

Application	Electromagnetic level switches
Port Sizes:	Fastening by means of flange or screw connection
Material	
Flange/Threaded body:	Aluminium
Seals:	NBR or FPM or EPDM
Tube:	Stainless Steel
Float:	Stainless Steel
Temperature range:	-25°C to 110°C
Instrument plug:	DIN43650A
Degree of protection:	IP65
Switching current:	Level: max. 1.3 A Temperature: 2 A
Switching voltage:	Level: max. 220 V AC / 50 V DC Temperature: max. 220 V AC / 50 V DC
Switching power:	80 W
Temperature switching point:	60/70/80 ° C
Temperature accuracy:	± 10%
Contact functions:	Normally closed or normally open

EAVL-T Level switches with thermo switch



Order Codes

Series	-	A	-	B	C	D	E	F
EAVL-T	-	G1	-	500	B	NO	T60	NO
A Size	Spare cartridge				C Seal			
G1	G 1" thread connection				B	NBR		
F42	3 holes flange				V	FPM		
M20	M20 thread connection				E	EPDM		
B Length(L)					D Level switch Contact function			
150					NO Normally opened in presence of fluid			
200					NC Normally closed in presence of fluid			
250								
300					E Temperature switching point			
400					T60 60°C			
500					T70 70°C			
600					T80 80°C			
800								
1000					F Thermo switch Contact function			
					NO Normally Open at set temperature			
					NC Normally Closed at set temperature			