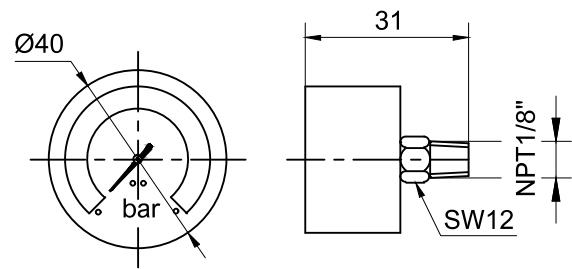


Vacuum Indicators

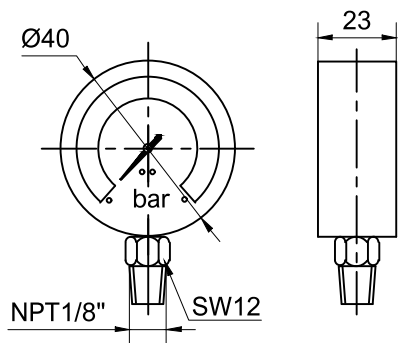
Vacuum gauges

Material: steel housing
Seals: NBR
Temperature range: -10°C to 100°C

Axial mounting



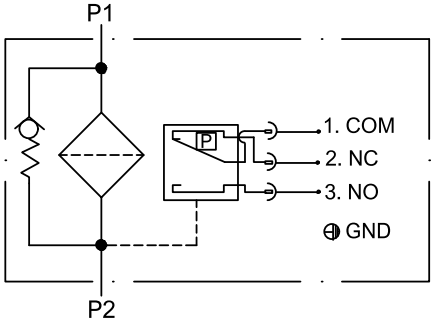
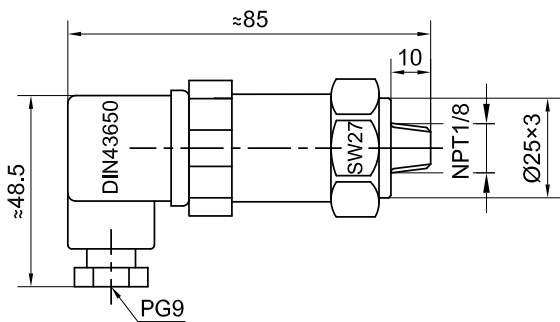
Radial mounting



Type	Description	Connection	Indicator
VA	Axial vacuum gauge	1/8" NPT	-1 – 0 bar
VR	Radial vacuum gauge	1/8" NPT	-1 – 0 bar

Electrical Vacuum Indicator

Operating pressure: max. 20 bar
Seals: NBR
Temperature range: -10°C to 100°C
Ingress protection: IP65
Electric characteristics: 250 V AC, 1 A



Type	Description	Connection	Indicator
S03	Vacuum switch	1/8" NPT	-0.3 bar
S02	Vacuum switch	1/8" NPT	-0.2 bar