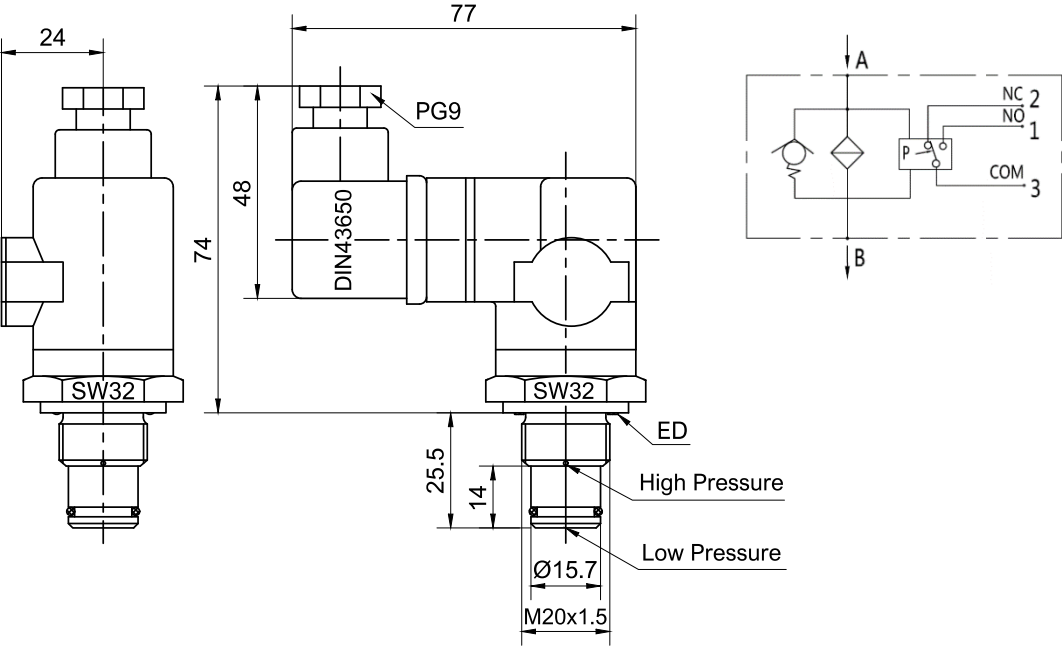


Differential Pressure Indicators

Electric Differential Pressure Indicator

Operating pressure:	max. 315 bar
Seals:	NBR
Temperature range:	-10°C to 100°C
Ingress protection:	IP65
Electric characteristics:	250 V AC, 1 A



Type	Description	Connection	Indicator
E13S	Electric differential pressure indicator	M20x1.5	1.3 bar
E20S	Electric differential pressure indicator	M20x1.5	2.0 bar
E25S	Electric differential pressure indicator	M20x1.5	2.5 bar
E50S	Electric differential pressure indicator	M20x1.5	5.0 bar
E80S	Electric differential pressure indicator	M20x1.5	8.0 bar