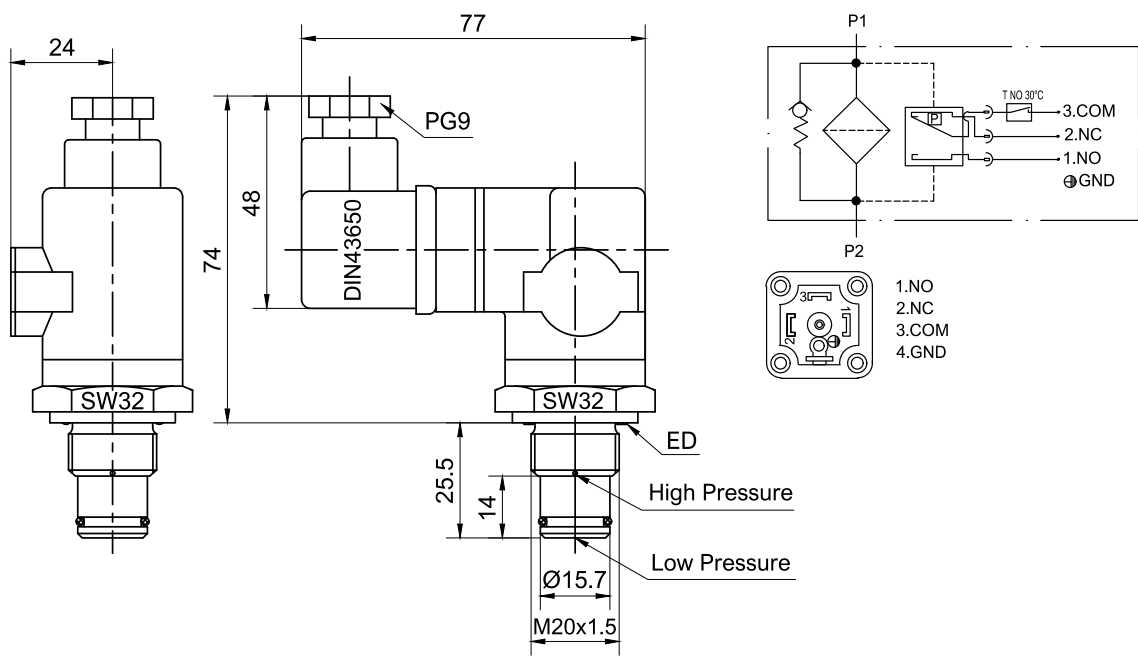


Differential Pressure Indicators

Electric Differential Pressure Indicator

Operating pressure:	max. 420 bar
Seals:	NBR
Temperature range:	-10°C to 100°C
Ingress protection:	IP65
Electric characteristics:	250 V AC, 1 A
Integrated thermostat:	Indicator starts working at 30°C oil temperature



Type	Description	Connection	Indicator
E20T	Electric differential pressure indicator	M20x1.5	2.0 bar
E50T	Electric differential pressure indicator	M20x1.5	5.0 bar