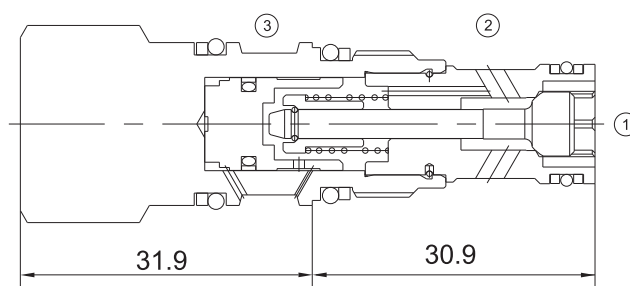


# EVCD-CKBB PILOT CHECK VALVE



## Technical Specifications

|                            |  |
|----------------------------|--|
| Operating Pressure :       | 350Bar   |
| Flow :                     | 30L/min  |
| Maximum internal leakage : | 0.07 ml/min at 350bar  |
| Pilot ratio:               | 3:1  |
| Operating temperature :    | -30°C to + 120°C (-22°F to +250°F)                                     |
| Cavity :                   | T-163A   |
| Fluids:                    | Mineral based or synthetic hydraulic fluid with lubricating properties |
| Fluid viscosity range :    | 7.4 to 420cSt.   |

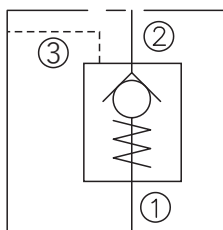
## Features

- Hardened seat for long life
- Industry common cavity
- Low leakage design
- Provides hose break protection, prevents loads from drifting and positively locks pressurized loads.

## Operation

This valve is a pilot to open check valve. It has a non-sealed pilot, a steel seat, and is non-vented. It allows free flow from the valve (port 2) to the load (port 1) and blocks flow in the opposite direction. Pressure at the pilot (port 3) will open the valve from port 1 to port 2. Pilot pressure needed at port 3 to open the valve is directly proportional to the load pressure at port 1. Pressure at port 2 directly opposes pilot pressure.

## Symbol



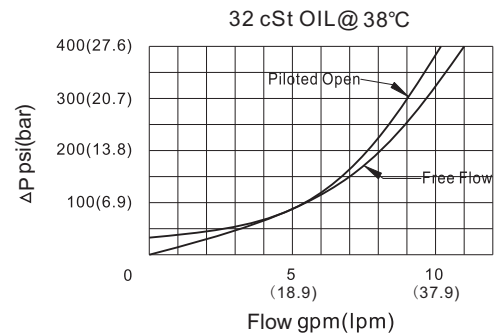
Order Codes

|         |      | Base Model | Cracking pressure | Seals   |
|---------|------|------------|-------------------|---------|
| Example | EVCD | - CKBB-X   | Table 1           | Table 2 |
|         | EVCD | - CKBB-X   | A                 | B       |

| Table 1 |                   |
|---------|-------------------|
| Code    | Cracking pressure |
| C       | 2 bar             |
| E       | 5 bar             |

| Table 2 |       |
|---------|-------|
| Code    | Seals |
| B       | NBR   |
| V       | FKM   |

Performance Curves



Installation Dimensions

