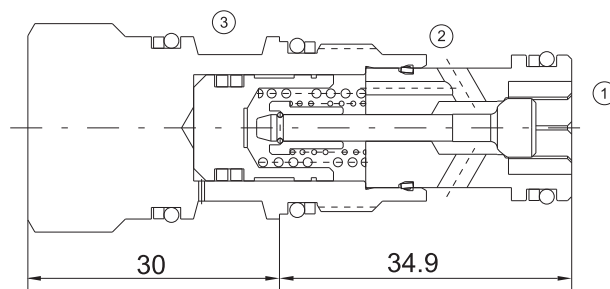


EVCD-CKCB PILOT CHECK VALVE



Technical Specifications

Operating Pressure :	350Bar
Flow :	60L/min
Maximum internal leakage :	0.07 ml/min at 350bar
Pilot ratio:	3:1
Operating temperature :	-30°C to + 120°C (-22°F to +250°F)
Cavity :	T-11A
Fluids:	Mineral based or synthetic hydraulic fluid with lubricating properties
Fluid viscosity range :	7.4 to 420cSt.

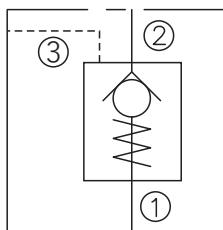
Features

- Hardened seat for long life
- Industry common cavity
- Low leakage design
- Provides hose break protection, prevents loads from drifting and positively locks pressurized loads.

Operation

This valve is a pilot to open check valve. It has a non-sealed pilot, a steel seat, and is non-vented. It allows free flow from the valve (port 2) to the load (port 1) and blocks flow in the opposite direction. Pressure at the pilot (port 3) will open the valve from port 1 to port 2. Pilot pressure needed at port 3 to open the valve is directly proportional to the load pressure at port 1. Pressure at port 2 directly opposes pilot pressure.

Symbol



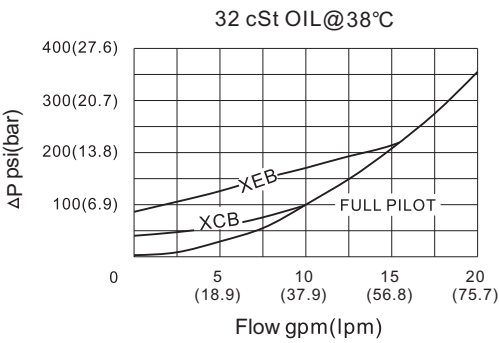
Order Codes

	Base Model		Cracking pressure	Seals
	EVCD	- CKCB-X	Table 1	Table 2
Example	EVCD	- CKCB-X	A	B

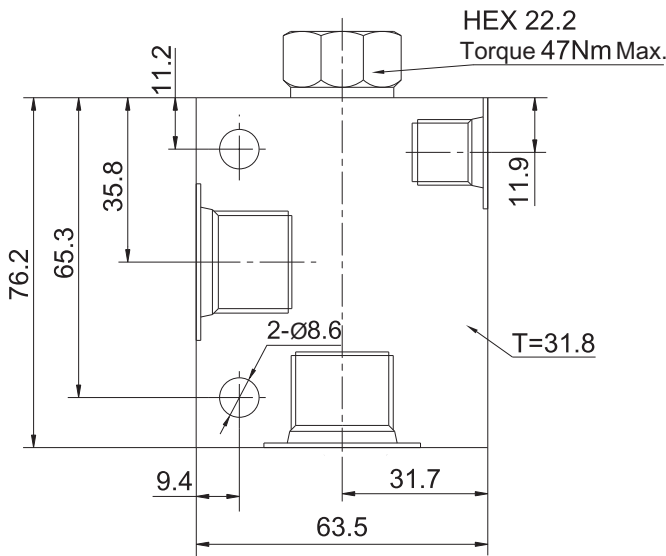
Table 1	
Code	Cracking pressure
A	0.3 bar
B	1 bar
C	2 bar
D	3.5 bar
E	5 bar
F	7 bar
Z	0.07 bar

Table 2	
Code	Seals
B	NBR
V	FKM

Performance Curves



Installation Dimensions



Technical specification subject to change without prior notice. Other specification on request. 2025