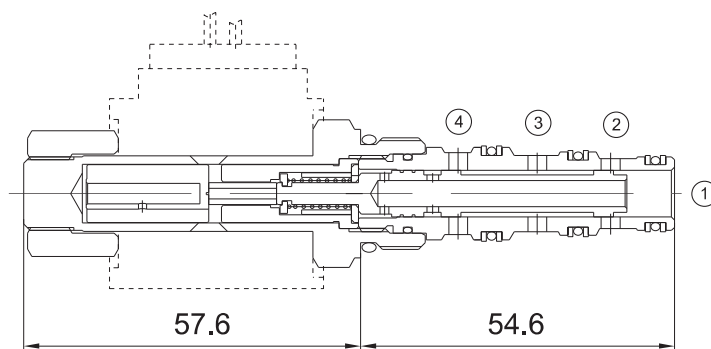


EVCE-HF08-242

4-way ,2-position



Technical Specifications

Operating Pressure :	207Bar
Flow :	11.4L/min
Internal leakage :	82ml/min at 207bar
Operating temperature :	-30°C to+ 120°C (- 22°F to+ 250°F)
Cavity :	VC08-4
Fluids:	Mineral based or synthetic hydraulic fluid with lubricating properties
Fluid viscosity range :	7.4 to 420cSt.

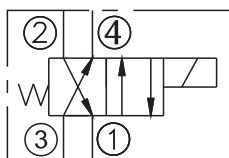
Features

- Hardened seat for long life
- Compact size
- Industry common cavity
- Continuous-duty rated solenoid
- Optional coil voltages and terminations

Operation

When de-energized, the EVCE-HF08-242 flow paths are port 2 to port 1, and port 3 to port 4.
When energized, the valve's spool shifts to open port 3 to port 2, and port 4 to port 1.

Symbol



Order Codes

	Base Model			Option	Seals	Voltage	Coil Connection		
	EVCE	-	HF08-242	Table 1	-	Table 2	-	Table 3	Table 4
Example	EVCE	-	HF08-242	M	-	B	-	24	H

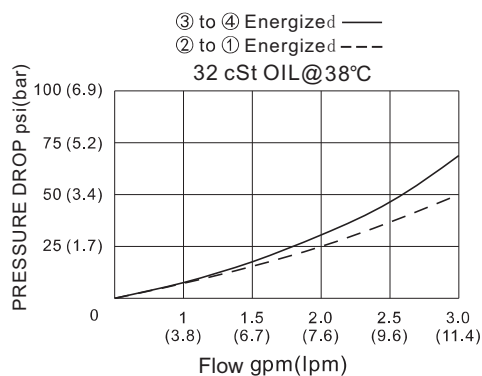
Table 1	
Code	Option
Blank	Not Manual
M	Manual Emergency

Table 2	
Code	Seals
B	NBR
V	FKM

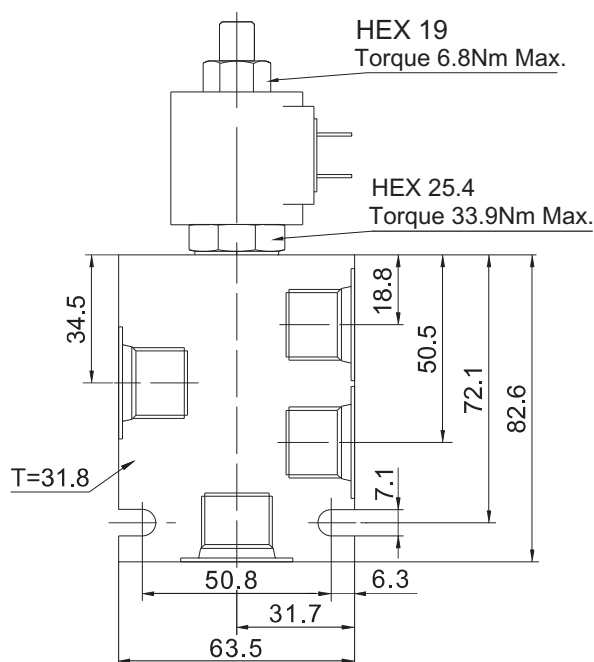
Table 3	
Code	Voltage
12	12VDC
24	24VDC
110	110VAC
220	220VAC

Table 4	
Code	Coil Connection
H	DIN43650
F	Deutsch DT04-2P
A	Amp Plug
D	Double Lead
S	Single Lead

Performance Curves



Installation Dimensions



Technical specification subject to change without prior notice. Other specification on request. 2025