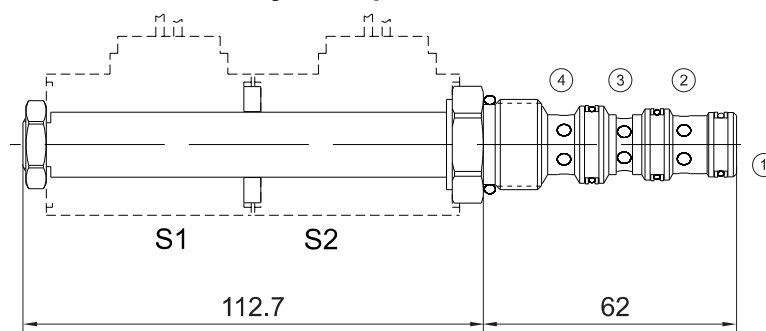


# EVCE-SV10-47C

## 4-way ,3-position



### Technical Specifications

Operating Pressure :	240Bar
Flow :	23L/min
Internal leakage :	164ml/min at 240bar
Operating temperature :	-30°C to+ 120°C (- 22°F to+ 250°F)
Cavity :	VC10-4
Fluids:	Mineral based or synthetic hydraulic fluid with lubricating properties
Fluid viscosity range :	7.4 to 420cSt.

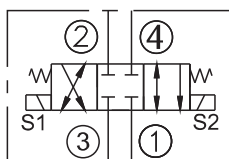
### Features

- Hardened seat for long life
- Compact size
- Industry common cavity
- Continuous-duty rated solenoid
- Optional coil voltages and terminations

### Operation

When de-energized, the EVCE-SV10-47C blocks all ports. When coil 1 is energized, flow is allowed from 3 to 4, and from 2 to 1. When coil 2 is energized, flow is allowed from 3 to 2, and from 4 to 1.

### Symbol



## Order Codes

	Base Model			Option	Seals		Voltage	Coil Connection	
	EVCE	-	SV10-47C	Table 1	-	Table 2	-	Table 3	Table4
Example	EVCE	-	SV10-47C	M	-	B	-	24	H

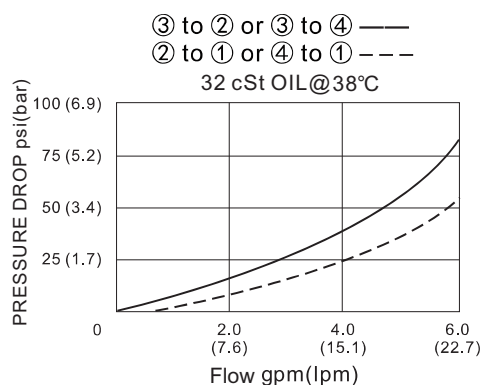
Table 1	
Code	Option
Blank	Not Manual
M	Manual Emergency

Table 2	
Code	Seals
B	NBR
V	FKM

Table 3	
Code	Voltage
12	12VDC
24	24VDC
110	110VAC
220	220VAC

Table 4	
Code	Coil Connection
H	DIN43650
F	Deutsch DT04-2P
A	Amp Plug
D	Double Lead
S	Single Lead

## Performance Curves



## Installation Dimensions

