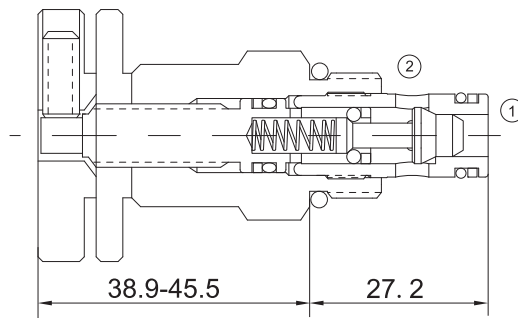


EVCF-FC08

THROTTLE CHECK VALVE



Technical Specifications

Operating Pressure :	250Bar
Flow :	18L/min
Internal leakage :	3drops/min at 250bar
Operating temperature :	-30°C to+ 120°C (- 22°F to+ 250°F)
Cavity :	VC08-2
Fluids:	Mineral based or synthetic hydraulic fluid with lubricating properties
Fluid viscosity range :	7.4 to 420cSt.

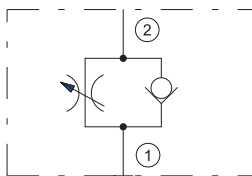
Features

- Hardened seat for long life
- Compact size
- Industry common cavity
- Desired settings may be locked down.

Operation

The valve acts as a restrictor in the 2 to 1 direction. As a check valve it provides free flow in the 1 to 2 flow path.

Symbol



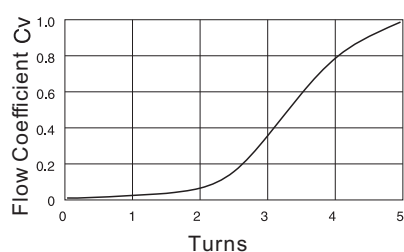
Order Codes

	Base Model		Adjustment Option	Seals	
	EVCF	-	FC08	Table 1	Table 2
Example	EVCF	-	FC08	K	B

Table 1	
Code	Adjustment Option
Blank	Screw adjustment
K	Knob adjustment

Table 2	
Code	Seals
B	NBR
V	FKM

Performance Curves



$$\text{FLOW IN GPM} = \frac{C_v \sqrt{P_1 - P_2}}{\sqrt{G_f}}$$

C_v = Flow Coefficient G_f = specific gravity of medium at opening
 P_1 = Inlet Pressure (psi) temperature (°F)
 P_2 = Outlet Pressure (psi)

Installation Dimensions

