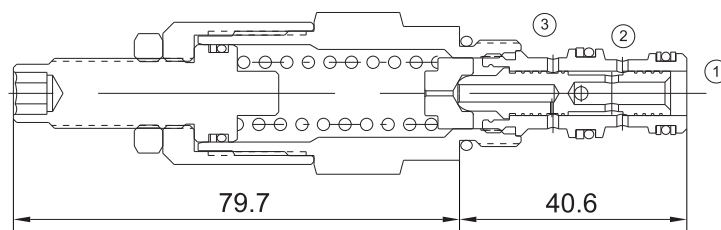


# EVCP-DPR08

## PRESSURE REDUCING /RELIEVING VALVE (DIRECT ACTING)



### Technical Specifications

Operating Pressure :	207Bar
Flow :	11.4L/min
Internal leakage ( ②to③ ) :	82ml/min (Max to 80% of nominal setting )
Operating temperature :	-30°C to+ 120°C (- 22°F to+ 250°F)
Cavity :	VC08-3
Fluids:	Mineral based or synthetic hydraulic fluid with lubricating properties
Fluid viscosity range :	7.4 to 420cSt.

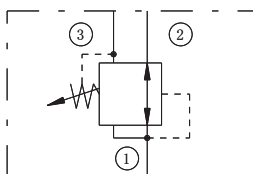
### Features

- Hardened seat for long life
- Compact size
- Industry common cavity
- Low leakage design
- Fast closing and seating

### Operation

On attainment of a pre-determined pressure at port ①, the cartridge shifts to block flow at port ② , thereby regulating pressure at port ①. In this mode, the valve will also relieve port 1 to port ③ at a variable value over the set reducing pressure.

### Symbol



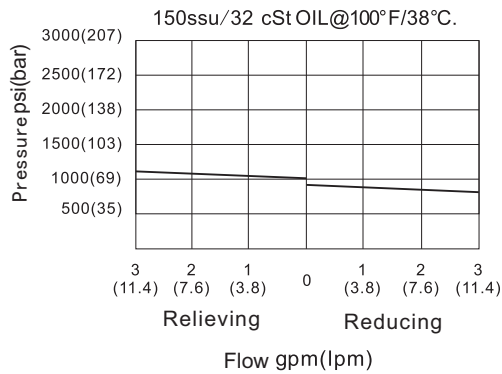
## Order Codes

Base Model				Pressure Range	Seals
Example	EVCP	-	DPR	08	Table 1
	EVCP	-	DPR	08	3

Table 1	
Code	Pressure Range
3	3.4-20.7 bar; Preset: 10.3bar
6	6.9-41.4 bar; Preset: 20.7bar
12	20.7-82.8 bar; Preset: 41.4bar
22	34.5-152 bar; Preset: 76bar

Table 2	
Code	Seals
B	NBR
V	FKM

## Performance Curves



## Installation Dimensions

