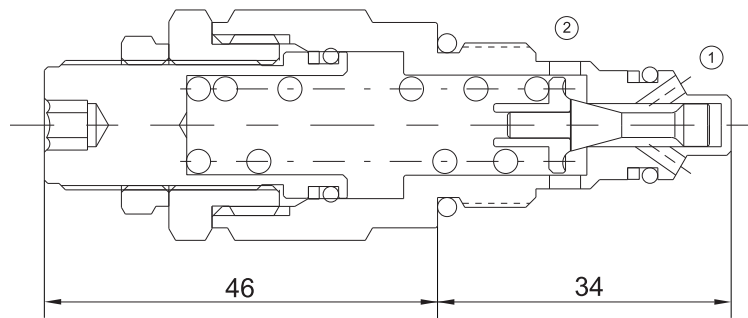


# EVCP-NRV08

## DIRECT ACTING RELIEF VALVE



### Technical Specifications

Operating Pressure :	350Bar
Flow :	30L/min
Maximum internal leakage :	5drops/min (Max to 80% of nominal setting )
Operating temperature :	-30°C to+ 120°C (- 22°F to+ 250°F)
Cavity :	VC08-2
Fluids:	Mineral based or synthetic hydraulic fluid with lubricating properties
Fluid viscosity range :	7.4 to 420cSt.

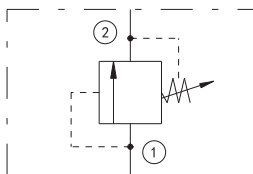
### Features

- Hardened seat for long life
- Compact size
- Industry common cavity
- Low leakage design
- Fast closing and seating

### Operation

EVCP-RV08-20 blocks flow from port 1 to port 2 until sufficient pressure is present at port 1 to force the spring opposed poppet off its seat.

### Symbol



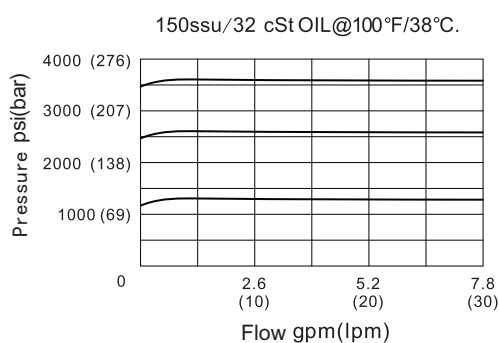
## Order Codes

	Base Model			Pressure Range	Seals
	EVCP	-	NRV 08		
Example	EVCP	-	NRV 08	50	B

Table 1	
Code	Pressure Range
18	20-125 bar
26	40-180 bar
50	180-350 bar

Table 2	
Code	Seals
B	NBR
V	FKM

## Performance Curves



## Installation Dimensions

