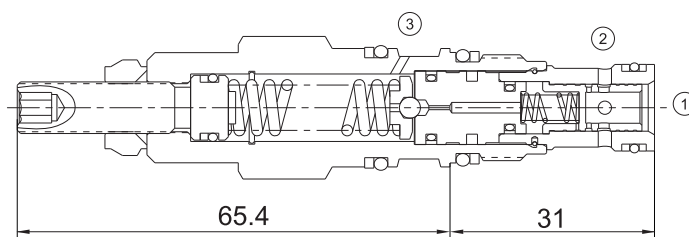


# EVCP-PBBB

## PRESSURE REDUCING VALVE



### Technical Specifications

Operating Pressure :	350Bar
Flow :	20L/min
Control Pilot Flow :	0.11-0.16L/min
Operating temperature :	-30°C to+ 120°C (- 22°F to+ 250°F)
Cavity :	T-163A
Fluids:	Mineral based or synthetic hydraulic fluid with lubricating properties
Fluid viscosity range :	7.4 to 420cSt.

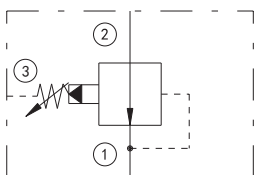
### Features

- Full reverse flow from reduced pressure (port 1) to inlet (port 2) may cause the main spool to close. If reverse free flow is required in the circuit, consider adding a separate check valve to the circuit.
- Pilot operated Valve exhibit exceptionally flat pressure/flow characteristics, are very stable and have low hysteresis.

### Operation

Pilot-operated, pressure reducing Valve reduce a high primary pressure at the inlet (port 2) to a constant reduced pressure at port 1, allowing circuits with multiple pressure requirements to be operated using a single pump.

### Symbol



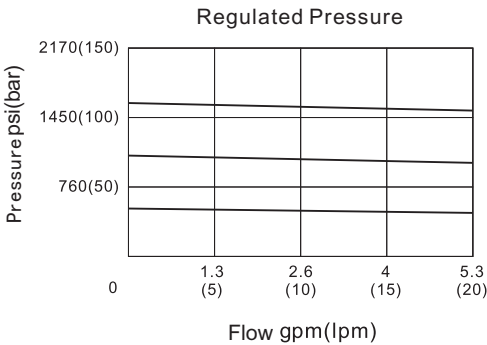
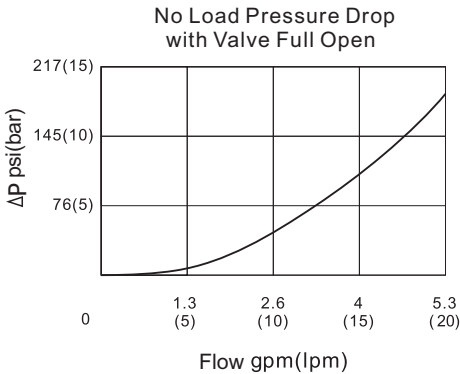
Order Codes

Base Model			Pressure Range	Seals
Example	EVCP	-	PBBB-L	Table 1
	EVCP	-	PBBB-L	Table 2

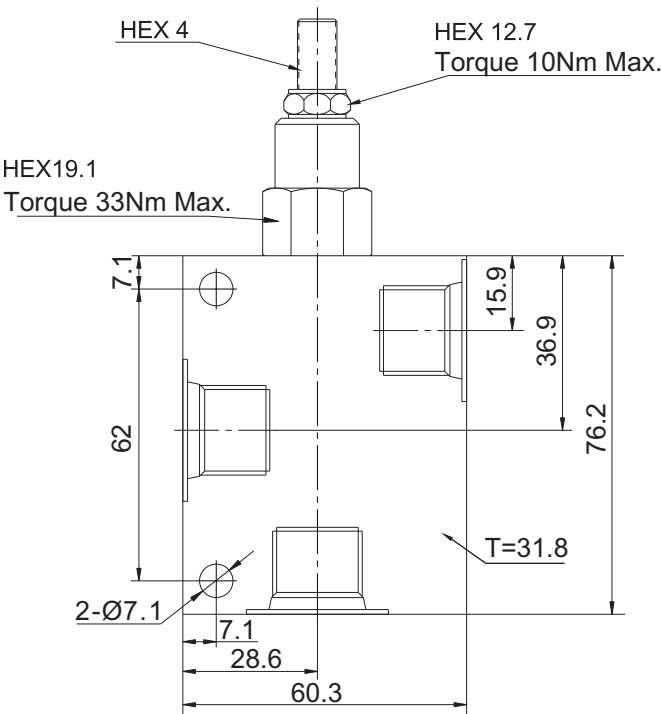
Table 1	
Code	Pressure Range
A	5-210 bar; Preset: 14bar
B	5-105 bar; Preset: 14bar
W	5-315 bar; Preset: 14bar
N	5-55 bar; Preset: 14bar
Q	5-28 bar; Preset: 14bar

Table 2	
Code	Seals
B	NBR
V	FKM

Performance Curves



Installation Dimensions



Technical specification subject to change without prior notice. Other specification on request. 2025