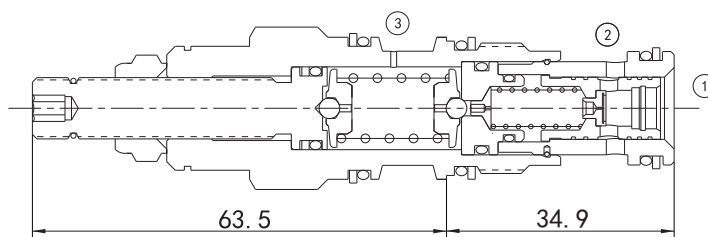


# EVCP-PBDB

## PRESSURE REDUCING VALVE



### Technical Specifications

Operating Pressure :	350Bar
Flow :	40L/min
Control Pilot Flow :	0.11-0.16L/min
Operating temperature :	-30°C to+ 120°C (- 22°F to+ 250°F)
Cavity :	T-11A
Fluids:	Mineral based or synthetic hydraulic fluid with lubricating properties
Fluid viscosity range :	7.4 to 420cSt.

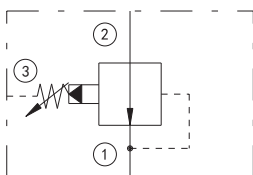
### Features

- Full reverse flow from reduced pressure (port 1) to inlet (port 2) may cause the main spool to close. If reverse free flow is required in the circuit, consider adding a separate check valve to the circuit.
- Pilot operated Valve exhibit exceptionally flat pressure/flow characteristics, are very stable and have low hysteresis.

### Operation

Pilot-operated, pressure reducing Valve reduce a high primary pressure at the inlet (port 2) to a constant reduced pressure at port 1, allowing circuits with multiple pressure requirements to be operated using a single pump.

### Symbol



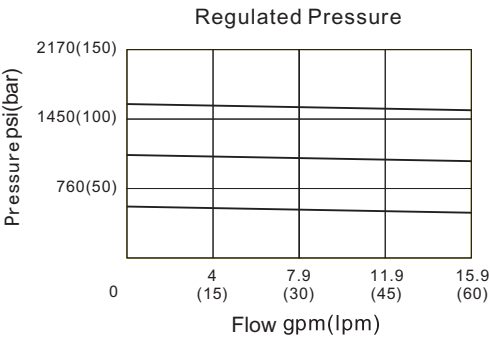
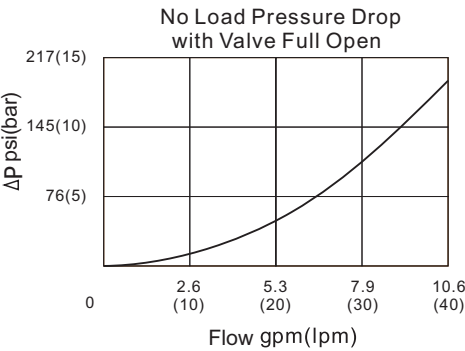
### Order Codes

		Base Model	Pressure Range	Seals
Example	EVCP	- PBDB-L	Table 1	Table 2
	EVCP	- PBDB-L	A	B

Table 1			
Code	Pressure Range		
A	7-210 bar; Preset: 14bar		
B	3.5-105 bar; Preset: 14bar		
W	10.5-315 bar; Preset: 14bar		
N	4-55 bar; Preset: 14bar		
Q	4-28 bar; Preset: 14bar		
Code	Pressure Range		
C	10.5-420 bar; Preset: 14bar		
D	1.7-55 bar; Preset: 14bar		
E	1.7-28 bar; Preset: 14bar		
G	4-210 bar; Preset: 14bar		
K	5-105 bar; Preset: 14bar		
P	2.8-28 bar; Preset: 14bar		

Table 2	
Code	Seals
B	NBR
V	FKM

### Performance Curves



### Installation Dimensions

