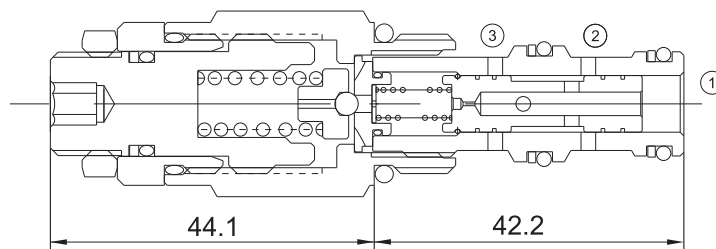


# EVCP-PR08

## PRESSURE REDUCING /RELIEVING VALVE (PILOT-OPERATED)



### Technical Specifications

Operating Pressure :	350Bar
Flow :	23L/min
Internal leakage (②to③) :	82ml/min (Max to 80% of nominal setting )
Operating temperature :	-30°C to+ 120°C (- 22°F to+ 250°F)
Cavity :	VC08-3
Fluids:	Mineral based or synthetic hydraulic fluid with lubricating properties
Fluid viscosity range :	7.4 to 420cSt.

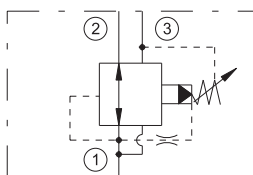
### Features

- Hardened seat for long life
- Compact size
- Industry common cavity
- Low leakage design
- Fast closing and seating

### Operation

On attainment of a pre-determined pressure at port ①, the cartridge shifts to block flow at port ② , thereby regulating pressure at port ①. In this mode, the valve will also relieve port 1 to port ③ at a variable value over the set reducing pressure.

### Symbol



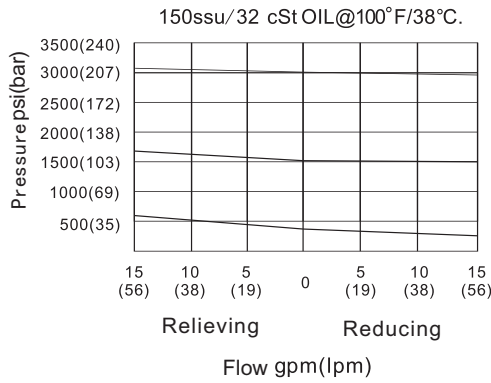
### Order Codes

Base Model				Pressure Range	Seals
Example	EVCP	-	PR 08	Table 1	Table 2
	EVCP	-	PR 08	50	B

Table 1	
Code	Pressure Range
50	138-350 bar; Preset: 276bar

Table 2	
Code	Seals
B	NBR
V	FKM

### Performance Curves



### Installation Dimensions

