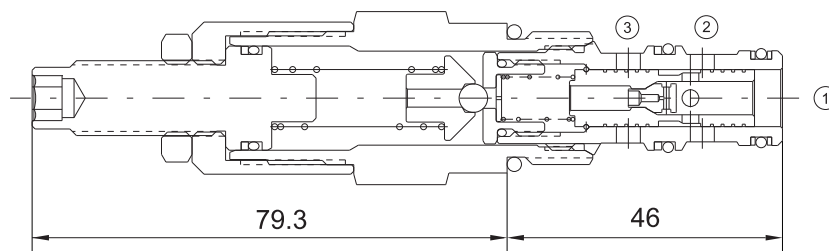


EVCP-PR10-36

PRESSURE REDUCING /RELIEVING VALVE (PILOT-OPERATED)



Technical Specifications

Operating Pressure :	Port 1: 240Bar Port 2: 240Bar Port 3: 69Bar
Flow :	56.8L/min
Maximum pilot flow :	0.17 L/min
Operating temperature :	-30°C to+ 120°C (- 22°F to+ 250°F)
Cavity :	VC10-3
Fluids:	Mineral based or synthetic hydraulic fluid with lubricating properties
Fluid viscosity range :	7.4 to 420cSt.

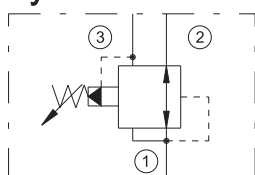
Features

- Hardened seat for long life
- Compact size
- Industry common cavity
- Low leakage design
- Fast closing and seating

Operation

In its steady state, the EVCP-PR10-36 allows flow to pass bidirectionally from port 2 to port 1, with the spring chamber constantly drained at port 3. Upon attainment of a predetermined pressure at port 1, the spool shifts to restrict inlet flow from port 2, thereby regulating pressure at port 1. In this mode the valve will also relieve port 1 to port 3.

Symbol



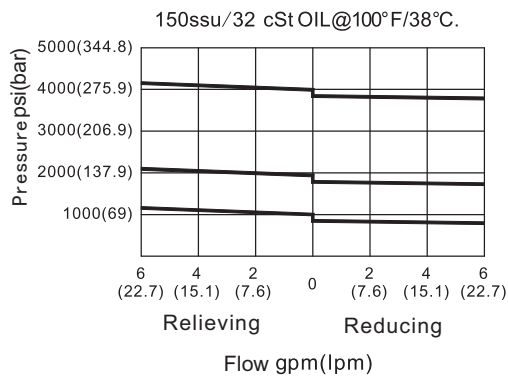
Order Codes

	Base Model				Pressure Range		Setting In Bar		Seals
	EVCP	-	PR	10-36A	Table 1	/	200	-	Table 2
Example	EVCP	-	PR	10-36A	30	/	200	-	B

Table 1	
Code	Pressure Range
04	6.9-27.6 bar; Preset: 14bar
15	10.3-103 bar; Preset: 52bar
30	27.6-207 bar; Preset: 104bar

Table 2	
Code	Seals
B	NBR
V	FKM

Performance Curves



Installation Dimensions

