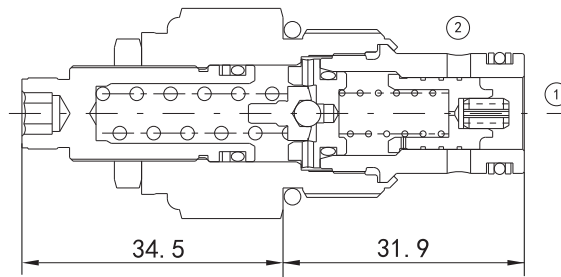


# EVCP-RAH10

## PILOT-OPERATED RELIEF VALVE



### Technical Specifications

Operating Pressure :	380Bar
Flow :	113L/min
Maximum internal leakage :	5drops/min (Max to 80% of nominal setting )
Operating temperature :	-30°C to+ 120°C (- 22°F to+ 250°F)
Cavity :	VC10-2
Fluids:	Mineral based or synthetic hydraulic fluid with lubricating properties
Fluid viscosity range :	7.4 to 420cSt.

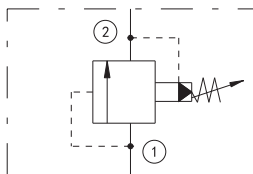
### Features

- Hardened seat for long life
- Compact size
- Industry common cavity
- Not suitable for use in load holding applications due to spool leakage

### Operation

Pilot-operated, balanced-piston relief cartridges are normally closed pressure regulating Valve. When the pressure at the inlet (port 1) reaches the valve setting, the valve starts to open to tank (port 2), throttling flow to regulate the pressure. These Valves are accurate, have low pressure rise vs. flow, they are smooth and quiet, and are moderately fast.

### Symbol



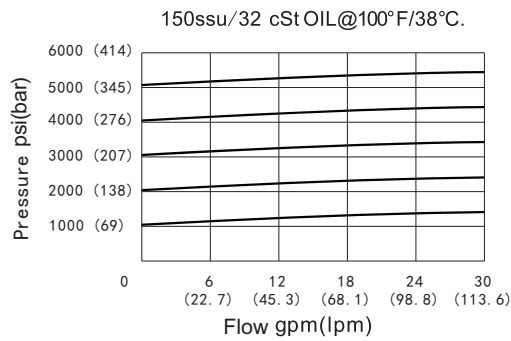
## Order Codes

Base Model				Pressure Range	Seals
Example	EVCP	-	RAH	10	Table 1
	EVCP	-	RAH	10	50
					B

Table 1	
Code	Pressure Range
10	6.9-69 bar
20	6.9-138 bar
30	13.8-207 bar
50	13.8-345 bar

Table 2	
Code	Seals
B	NBR
V	FKM

## Performance Curves



## Installation Dimensions

