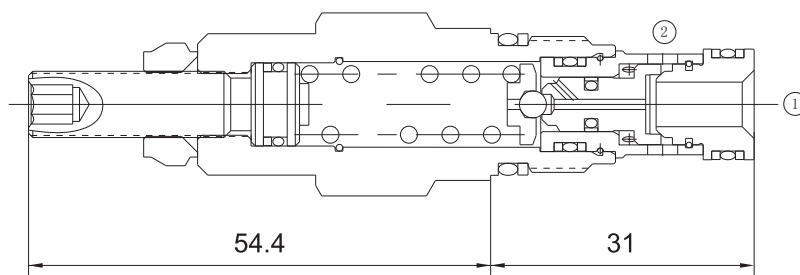


EVCP-RDBA DIRECT ACTING RELIEF VALVE



Technical Specifications

| | |
|-------------------------|------------------------------------------------------------------------|
| Operating Pressure : | 350Bar |
| Flow : | 45L/min |
| Operating temperature : | -30°C to+ 120°C (- 22°F to+ 250°F) |
| Cavity : | T-162A |
| Fluids: | Mineral based or synthetic hydraulic fluid with lubricating properties |
| Fluid viscosity range : | 7.4 to 420cSt. |

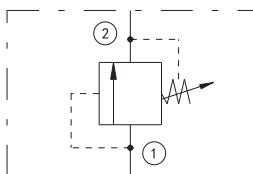
Features

- Will accept maximum pressure at port 2; suitable for use in cross port relief circuits.
- The seals on the adjust screw are exposed to system pressure which means this valve can only be adjusted when the pressure is removed.
The setting procedure is; check the setting, remove the pressure, adjust the valve, check the new setting.
- Valve is relatively insensitive to varying oil temperatures and oil contamination.

Operation

Direct-acting relief cartridges are normally closed, pressure-limiting Valve used to protect hydraulic components from pressure transients. When the pressure at the inlet (port 1) reaches the valve setting, the valve starts to open to tank (port 2), throttling flow to limit the pressure rise. These Valves are smooth and quiet, essentially zero leak, dirt tolerant, immune to silting and are very fast.

Symbol



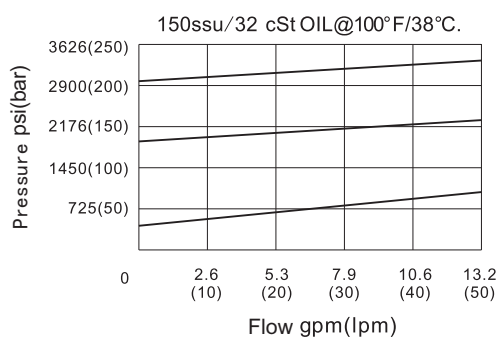
Order Codes

| Example | Base Model | | Pressure Range | Seals |
|---------|------------|---|----------------|---------|
| | EVCP | - | RDBA-L | Table 1 |
| | EVCP | - | RDBA-L | Table 2 |

| Table 1 | |
|---------|---------------------------|
| Code | Pressure Range |
| A | 35-210 bar; Preset: 70bar |
| B | 20-105 bar; Preset: 70bar |
| W | 55-315 bar; Preset: 70bar |
| C | 70-420 bar; Preset: 70bar |
| D | 14-55 bar; Preset: 28bar |
| E | 7-28 bar; Preset: 14bar |
| S | 3.5-14 bar; Preset: 7bar |

| Table 2 | |
|---------|-------|
| Code | Seals |
| B | NBR |
| V | FKM |

Performance Curves



Installation Dimensions

