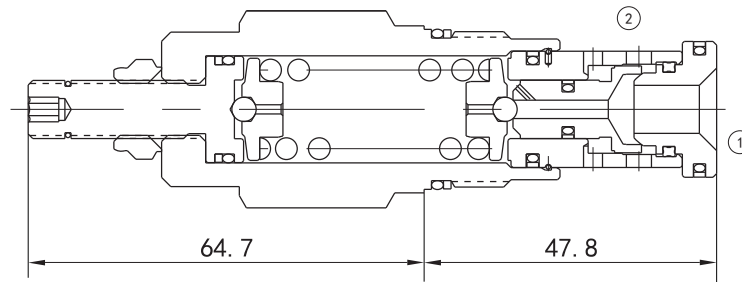


EVCP-RDFA DIRECT ACTING RELIEF VALVE



Technical Specifications

Operating Pressure :	350Bar
Flow :	200L/min
Operating temperature :	-30°C to+ 120°C (- 22°F to+ 250°F)
Cavity :	T-3A
Fluids:	Mineral based or synthetic hydraulic fluid with lubricating properties
Fluid viscosity range :	7.4 to 420cSt.

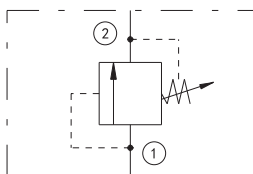
Features

- Will accept maximum pressure at port 2; suitable for use in cross port relief circuits.
- The seals on the adjust screw are exposed to system pressure which means this valve can only be adjusted when the pressure is removed.
The setting procedure is; check the setting, remove the pressure, adjust the valve, check the new setting.
- Valve is relatively insensitive to varying oil temperatures and oil contamination.

Operation

Direct-acting relief cartridges are normally closed, pressure-limiting Valve used to protect hydraulic components from pressure transients. When the pressure at the inlet (port 1) reaches the valve setting, the valve starts to open to tank (port 2), throttling flow to limit the pressure rise. These Valves are smooth and quiet, essentially zero leak, dirt tolerant, immune to silting and are very fast.

Symbol



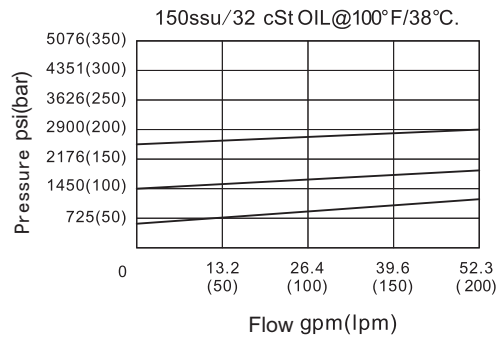
Order Codes

	Base Model		Pressure Range	Seals
	EVCP	-	RDFA-L	Table 1
Example	EVCP	-	RDFA-L	B

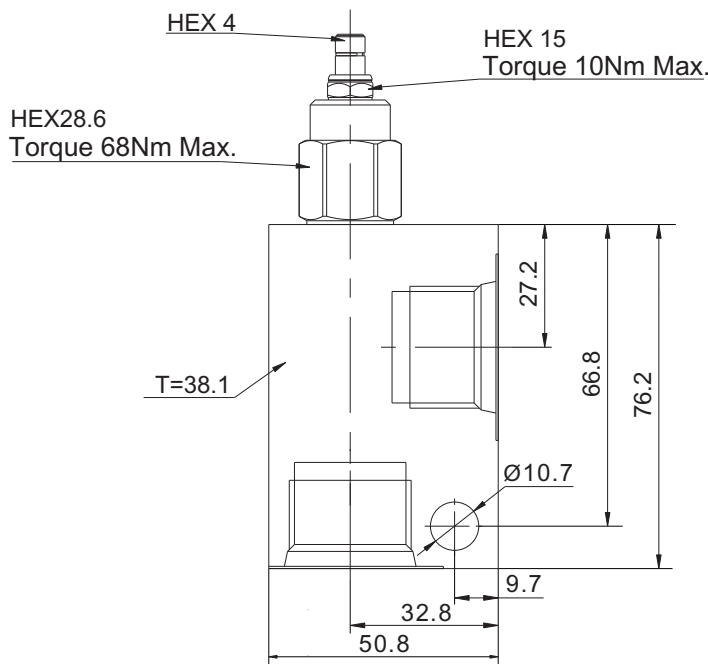
Table 1	
Code	Pressure Range
A	35-210 bar; Preset: 70bar
B	20-105 bar; Preset: 70bar
W	55-315 bar; Preset: 70bar
C	70-420 bar; Preset: 70bar
D	14-55 bar; Preset: 28bar
E	7-28 bar; Preset: 14bar
S	3.5-14 bar; Preset: 7bar

Table 2	
Code	Seals
B	NBR
V	FKM

Performance Curves



Installation Dimensions



Technical specification subject to change without prior notice. Other specification on request. 2025