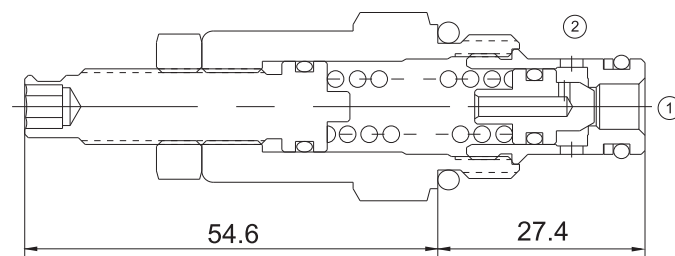


# EVCP-RV08-20

## DIRECT ACTING RELIEF VALVE



### Technical Specifications

Operating Pressure :	250Bar
Flow :	22.7L/min
Maximum internal leakage :	5drops/min (Max to 75% of nominal setting )
Operating temperature :	-30°C to+ 120°C (- 22°F to+ 250°F)
Cavity :	VC08-2
Fluids:	Mineral based or synthetic hydraulic fluid with lubricating properties
Fluid viscosity range :	7.4 to 420cSt.

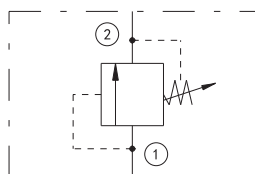
### Features

- Hardened seat for long life
- Compact size
- Industry common cavity
- Low leakage design
- Fast closing and seating

### Operation

EVCP-RV08-20 blocks flow from port 1 to port 2 until sufficient pressure is present at port 1 to force the spring opposed poppet off its seat.

### Symbol



## Order Codes

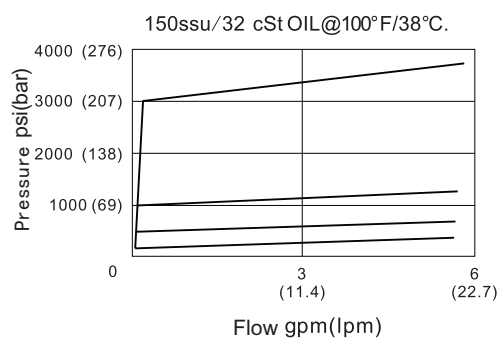
	Base Model				Adjustment Option	Pressure Range	Seals		
	EVCP	-	RV	08-20	Table 1	-	Table 2	-	Table 3
Example	EVCP	-	RV	08-20	K	-	33	-	B

Table 1	
Code	Adjustment Option
Blank	Screw adjustment
K	Knob adjustment

Table 3	
Code	Seals
B	NBR
V	FKM

Table 2	
Code	Pressure Range
5	3.4-34.4 bar
9	6.9-75.8 bar
18	17.2-158.5 bar
33	17.2-248.2 bar

## Performance Curves



## Installation Dimensions

