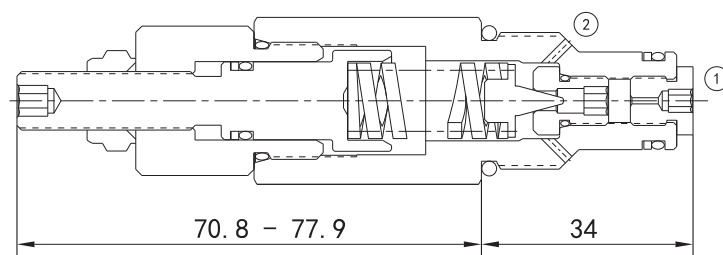


# EVCP-RV10-20

## DIRECT ACTING RELIEF VALVE



### Technical Specifications

|                            |  |
|----------------------------|--|
| Operating Pressure :       | 230Bar   |
| Flow :                     | 37.9L/min  |
| Maximum internal leakage : | 5drops/min (Max to 80% of nominal setting )                            |
| Operating temperature :    | -30°C to+ 120°C (- 22°F to+ 250°F)                                     |
| Cavity :                   | VC10-2   |
| Fluids:                    | Mineral based or synthetic hydraulic fluid with lubricating properties |
| Fluid viscosity range :    | 7.4 to 420cSt.   |

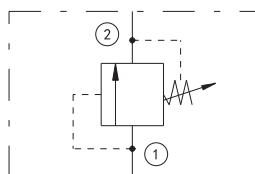
### Features

- Hardened seat for long life
- Compact size
- Industry common cavity
- Low leakage design
- Fast closing and seating

### Operation

EVCP-RV10-20 blocks flow from port 1 to port 2 until sufficient pressure is present at port 1 to force the spring opposed poppet off its seat.

### Symbol



## Order Codes

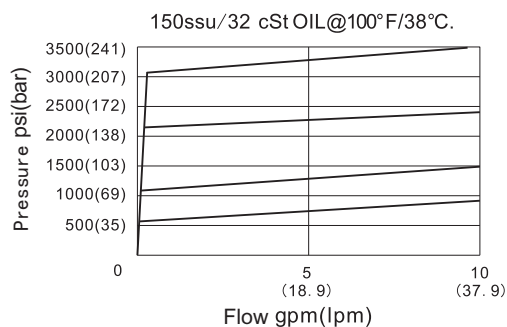
|         | Base Model |   |    |       | Adjustment Option | Pressure Range | Seals   |
|---------|------------|---|----|-------|-------------------|----------------|---------|
|         | EVCP       | - | RV | 10-20 | Table 1           | Table 2        | Table 3 |
| Example | EVCP       | - | RV | 10-20 | K                 | 23             | B       |

| Table 1 |                   |
|---------|-------------------|
| Code    | Adjustment Option |
| Blank   | Screw adjustment  |
| K       | Knob adjustment   |

| Table 2 |                  |
|---------|------------------|
| Code    | Pressure Range   |
| 6       | 3.45-41.38 bar   |
| 12      | 10.34-82.7 bar   |
| 23      | 17.24-158.62 bar |

| Table 3 |       |
|---------|-------|
| Code    | Seals |
| B       | NBR   |
| V       | FKM   |

## Performance Curves



## Installation Dimensions

